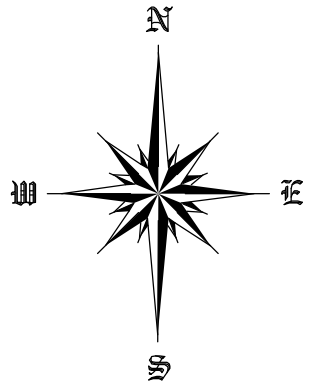


HIGHWAY 10

G.C. & S.F. R.R. SURVEY  
SECTION NUMBER 5  
ABSTRACT NUMBER 250  
ORANGE COUNTY, TEXAS

SET 1/2" I.R. W/CAP STAMPED "SESCO"  
NE CORNER CALLED 25.183 AC. TR.  
TEXAS STATE GRID COORDINATES NAD 1  
FOR TEXAS CENTRAL ZONE  
N:10068852.48  
E:4302865.64  
LATITUDE: 30°07'53.5353"  
LONGITUDE: 93°59'01.0304"  
CONVERGENCE ANGLE--03'16"14"



CONCORD ROAD

SET 1/2" I.R. W/CAP STAMPED "SESCO"  
NW CORNER CALLED 25.183 AC. TR.

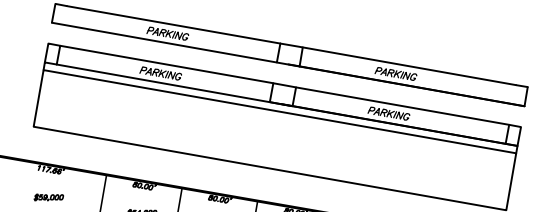
1.063 AC. TR.  
COUNTY CLERK FILE  
No. 280209  
O.C.D.R.

29  
28  
27  
26  
25  
24  
23  
22  
21  
20  
19  
18  
17  
16  
15  
14  
13  
12  
11

COLONIAL LANE  
AND  
LAKESIDE DRIVE  
ORANGE Co. MAP RECORDS

DEED CALLED 576°53'25"E  
S80°10'27"E  
82.19'

S80°10'26"E 596.80'



LOT 1  
LOT 2  
LAKESIDE DRIVE  
ORANGE Co. MAP RECORDS  
BLOCK 1

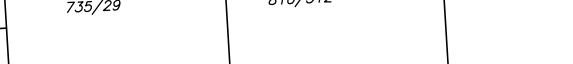
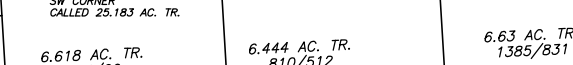
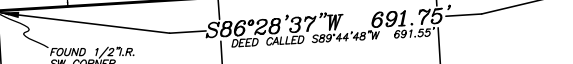
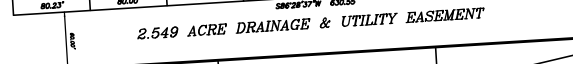
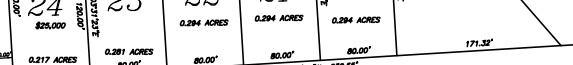
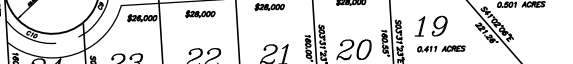
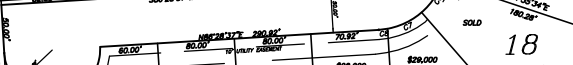
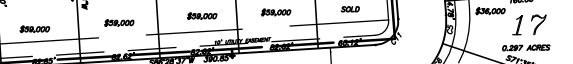
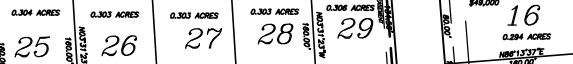
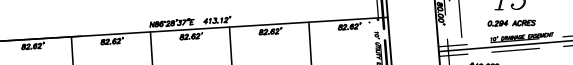
LAKESIDE DRIVE  
S80°10'26"E 412.12'



COMMON AREA  
6.489 ACRES

TOTAL SUB  
21.051 ACRES

POND



LOT 1  
LOT 2  
LAKESIDE DRIVE  
ORANGE Co. MAP RECORDS  
BLOCK 1

PRIVATE LAKE AR

LOT 13

LOT 14

BLOCK 11

LOT 1

LOT 2

LOT 3

LOT 5

LOT 6

- GENERAL NOTES:
1. THERE IS A 5 FOOT BUILDING SET BACK ON EACH SIDE OF ALL COMMON SIDE LOT LINES, UNLESS SHOWN OTHERWISE.
  2. THERE IS A 10 FOOT DRAINAGE AND UTILITY EASEMENT PARALLEL, ADJACENT AND OUTSIDE ALL STREET OR ROAD RIGHT OF WAY LINES AS SHOWN HEREON.
  3. WHERE REQUIRED FOR UTILITY SERVICE THERE IS A 10 FOOT UTILITY EASEMENT, 5 FEET ON EACH SIDE OF ALL COMMON LOT LINES FOR THE INSTALLATION OF UTILITY SERVICE AND GUYS.
  4. THE UTILITY AND DRAINAGE EASEMENTS SHOWN OR STATED HEREON SHALL REMAIN OPEN AND UNOBTSTRUCTED AT ALL TIMES.
  5. WHERE MORE THAN ONE LOT IS COMBINED INTO ONE BUILDING SITE, THE INTERIOR LOT LINE IN SAID SITE SHALL NOT INCLUDE NOR CONTAIN THE 5 FOOT BUILDING SET BACK IN ITEM NUMBER 1 ABOVE, NOR THE 10 FOOT UTILITY EASEMENT IN ITEM NUMBER 3 ABOVE, THE BUILDING LINE AND UTILITY EASEMENT SHALL BE APPLIED TO THE EXTERIOR SITE PROPERTY LINES OF THE BUILDING SITE.
  6. ALL LOT CORNERS SHALL BE MARKED WITH 1/2 INCH DIAMETER x 24 INCH LONG IRON RODS.
  7. THIS SUBDIVISION IS SHOWN TO BE LOCATED IN ZONE "C" ON THE FLOOD INSURANCE RATE MAP, PREPARED BY THE FEDERAL EMERGENCY MANAGEMENT AGENCY FOR COMMUNITY NUMBER 480514 PANEL NUMBER 0005 & EFFECTIVE DATE OF F.I.R.M. JANUARY 6, 1983.
  8. THE BEARINGS SHOWN HEREON ARE BASED ON THE TEXAS STATE GRID COORDINATE SYSTEM FOR THE TEXAS CENTRAL ZONE, NAD 1983, AND DISTANCES ARE BASED ON TRUE DISTANCES.
  9. THE FINISHED FLOOR ELEVATION OF ANY RESIDENCE SHALL NOT BE BELOW ELEVATION 21.5.

LOT	ACRES	AREA	PERCENT	BEARING	DISTANCE	BEARING	DISTANCE	BEARING	DISTANCE
1	0.362	124.8	0.58	S80°10'27"E	82.19'	S80°10'26"E	596.80'	S80°10'26"E	412.12'
2	0.294	95.8	0.47	S80°10'26"E	596.80'	S80°10'26"E	412.12'	S80°10'26"E	412.12'
3	0.294	95.8	0.47	S80°10'26"E	412.12'	S80°10'26"E	412.12'	S80°10'26"E	412.12'
4	0.294	95.8	0.47	S80°10'26"E	412.12'	S80°10'26"E	412.12'	S80°10'26"E	412.12'
5	0.310	100.0	0.50	S80°10'26"E	412.12'	S80°10'26"E	412.12'	S80°10'26"E	412.12'
6	0.488	157.0	0.78	S80°10'26"E	412.12'	S80°10'26"E	412.12'	S80°10'26"E	412.12'
7	0.294	95.8	0.47	S80°10'26"E	412.12'	S80°10'26"E	412.12'	S80°10'26"E	412.12'
8	0.294	95.8	0.47	S80°10'26"E	412.12'	S80°10'26"E	412.12'	S80°10'26"E	412.12'
9	0.294	95.8	0.47	S80°10'26"E	412.12'	S80°10'26"E	412.12'	S80°10'26"E	412.12'
10	0.294	95.8	0.47	S80°10'26"E	412.12'	S80°10'26"E	412.12'	S80°10'26"E	412.12'
11	0.294	95.8	0.47	S80°10'26"E	412.12'	S80°10'26"E	412.12'	S80°10'26"E	412.12'
12	0.294	95.8	0.47	S80°10'26"E	412.12'	S80°10'26"E	412.12'	S80°10'26"E	412.12'
13	0.294	95.8	0.47	S80°10'26"E	412.12'	S80°10'26"E	412.12'	S80°10'26"E	412.12'
14	0.294	95.8	0.47	S80°10'26"E	412.12'	S80°10'26"E	412.12'	S80°10'26"E	412.12'
15	0.294	95.8	0.47	S80°10'26"E	412.12'	S80°10'26"E	412.12'	S80°10'26"E	412.12'
16	0.294	95.8	0.47	S80°10'26"E	412.12'	S80°10'26"E	412.12'	S80°10'26"E	412.12'
17	0.297	97.0	0.48	S80°10'26"E	412.12'	S80°10'26"E	412.12'	S80°10'26"E	412.12'
18	0.001	0.3	0.00	S80°10'26"E	412.12'	S80°10'26"E	412.12'	S80°10'26"E	412.12'
19	0.411	133.0	0.67	S80°10'26"E	412.12'	S80°10'26"E	412.12'	S80°10'26"E	412.12'
20	0.294	95.8	0.47	S80°10'26"E	412.12'	S80°10'26"E	412.12'	S80°10'26"E	412.12'
21	0.294	95.8	0.47	S80°10'26"E	412.12'	S80°10'26"E	412.12'	S80°10'26"E	412.12'
22	0.294	95.8	0.47	S80°10'26"E	412.12'	S80°10'26"E	412.12'	S80°10'26"E	412.12'
23	0.217	70.0	0.35	S80°10'26"E	412.12'	S80°10'26"E	412.12'	S80°10'26"E	412.12'
24	0.281	90.0	0.45	S80°10'26"E	412.12'	S80°10'26"E	412.12'	S80°10'26"E	412.12'
25	0.304	98.0	0.50	S80°10'26"E	412.12'	S80°10'26"E	412.12'	S80°10'26"E	412.12'
26	0.303	97.0	0.49	S80°10'26"E	412.12'	S80°10'26"E	412.12'	S80°10'26"E	412.12'
27	0.303	97.0	0.49	S80°10'26"E	412.12'	S80°10'26"E	412.12'	S80°10'26"E	412.12'
28	0.303	97.0	0.49	S80°10'26"E	412.12'	S80°10'26"E	412.12'	S80°10'26"E	412.12'
29	0.306	98.0	0.50	S80°10'26"E	412.12'	S80°10'26"E	412.12'	S80°10'26"E	412.12'
30	0.294	95.8	0.47	S80°10'26"E	412.12'	S80°10'26"E	412.12'	S80°10'26"E	412.12'
31	0.294	95.8	0.47	S80°10'26"E	412.12'	S80°10'26"E	412.12'	S80°10'26"E	412.12'
32	0.294	95.8	0.47	S80°10'26"E	412.12'	S80°10'26"E	412.12'	S80°10'26"E	412.12'
33	0.294	95.8	0.47	S80°10'26"E	412.12'	S80°10'26"E	412.12'	S80°10'26"E	412.12'
34	0.217	70.0	0.35	S80°10'26"E	412.12'	S80°10'26"E	412.12'	S80°10'26"E	412.12'
35	0.281	90.0	0.45	S80°10'26"E	412.12'	S80°10'26"E	412.12'	S80°10'26"E	412.12'
36	0.304	98.0	0.50	S80°10'26"E	412.12'	S80°10'26"E	412.12'	S80°10'26"E	412.12'
37	0.303	97.0	0.49	S80°10'26"E	412.12'	S80°10'26"E	412.12'	S80°10'26"E	412.12'
38	0.294	95.8	0.47	S80°10'26"E	412.12'	S80°10'26"E	412.12'	S80°10'26"E	412.12'
39	0.294	95.8	0.47	S80°10'26"E	412.12'	S80°10'26"E	412.12'	S80°10'26"E	412.12'
40	0.294	95.8	0.47	S80°10'26"E	412.12'	S80°10'26"E	412.12'	S80°10'26"E	412.12'
41	0.294	95.8	0.47	S80°10'26"E	412.12'	S80°10'26"E	412.12'	S80°10'26"E	412.12'
42	0.217	70.0	0.35	S80°10'26"E	412.12'	S80°10'26"E	412.12'	S80°10'26"E	412.12'
43	0.281	90.0	0.45	S80°10'26"E	412.12'	S80°10'26"E	412.12'	S80°10'26"E	412.12'
44	0.304	98.0	0.50	S80°10'26"E	412.12'	S80°10'26"E	412.12'	S80°10'26"E	412.12'
45	0.303	97.0	0.49	S80°10'26"E	412.12'	S80°10'26"E	412.12'	S80°10'26"E	412.12'
46	0.294	95.8	0.47	S80°10'26"E	412.12'	S80°10'26"E	412.12'	S80°10'26"E	412.12'
47	0.294	95.8	0.47	S80°10'26"E	412.12'	S80°10'26"E	412.12'	S80°10'26"E	412.12'
48	0.294	95.8	0.47	S80°10'26"E	412.12'	S80°10'26"E	412.12'	S80°10'26"E	412.12'
49	0.294	95.8	0.47	S80°10'26"E	412.12'	S80°10'26"E	412.12'	S80°10'26"E	412.12'
50	0.217	70.0	0.35	S80°10'26"E	412.12'	S80°10'26"E	412.12'	S80°10'26"E	412.12'
51	0.281	90.0	0.45	S80°10'26"E	412.12'	S80°10'26"E	412.12'	S80°10'26"E	412.12'
52	0.304	98.0	0.50	S80°10'26"E	412.12'	S80°10'26"E	412.12'	S80°10'26"E	412.12'
53	0.303	97.0	0.49	S80°10'26"E	412.12'	S80°10'26"E	412.12'	S80°10'26"E	412.12'
54	0.294	95.8	0.47	S80°10'26"E	412.12'	S80°10'26"E	412.12'	S80°10'26"E	412.12'
55	0.294	95.8	0.47	S80°10'26"E	412.12'	S80°10'26"E	412.12'	S80°10'26"E	412.12'
56	0.294	95.8	0.47	S80°10'26"E	412.12'	S80°10'26"E	412.12'	S80°10'26"E	412.12'
57	0.294	95.8	0.47	S80°10'26"E	412.12'	S80°10'26"E	412.12'	S80°10'26"E	412.12'
58	0.217	70.0	0.35	S80°10'26"E	412.12'	S80°10'26"E	412.12'	S80°10'26"E	412.12'
59	0.281	90.0	0.45	S80°10'26"E	412.12'	S80°10'26"E	412.12'	S80°10'26"E	412.12'
60	0.304	98.0	0.50	S80°10'26"E	412.12'	S80°10'26"E	412.12'	S80°10'26"E	412.12'
61	0.303	97.0	0.49	S80°10'26"E	412.12'	S80°10'26"E	412.12'	S80°10'26"E	412.12'
62	0.294	95.8	0.47	S80°10'26"E	412.12'	S80°10'26"E	412.12'	S80°10'26"E	412.12'
63	0.294	95.8	0.47	S80°10'26"E	412.12'	S80°10'26"E	412.12'	S80°10'26"E	412.12'
64	0.294	95.8	0.47	S80°10'26"E	412.12'	S80°10'26"E	412.12'	S80°10'26"E	412.12'
65	0.294	95.8	0.47	S80°10'26"E	412.12'	S80°10'26"E	412.12'	S80°10'26"E	412.12'



2.549 ACRE DRAINAGE & UTILITY EASEMENT